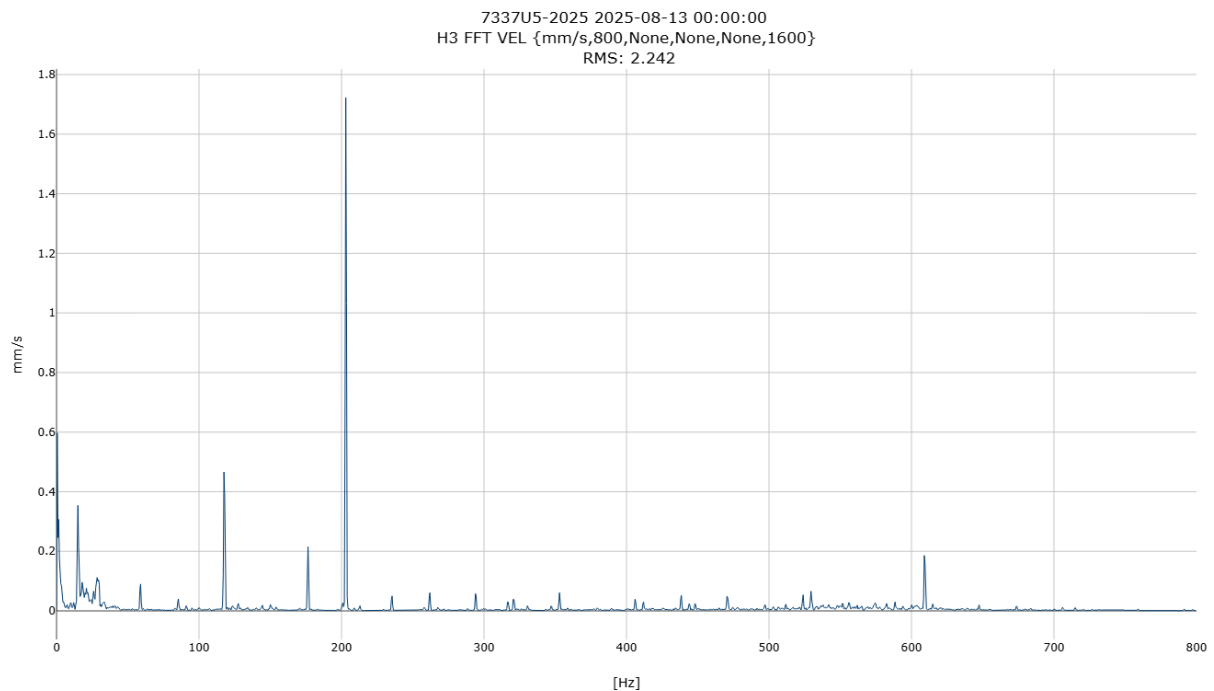
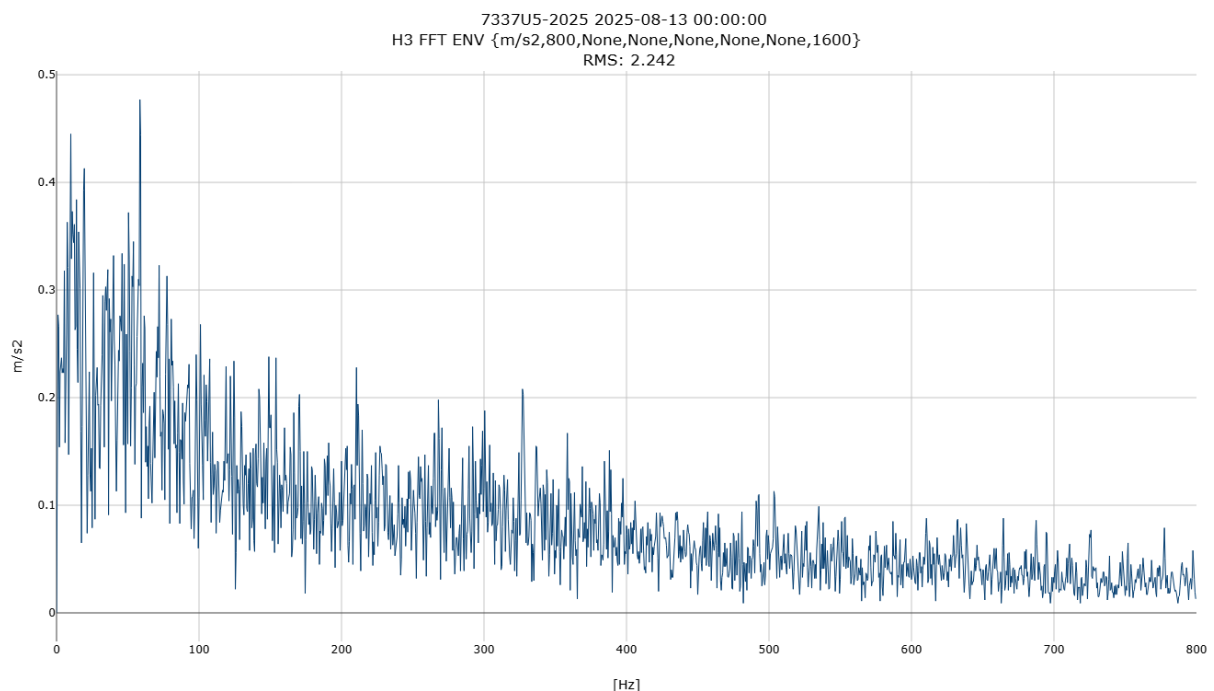




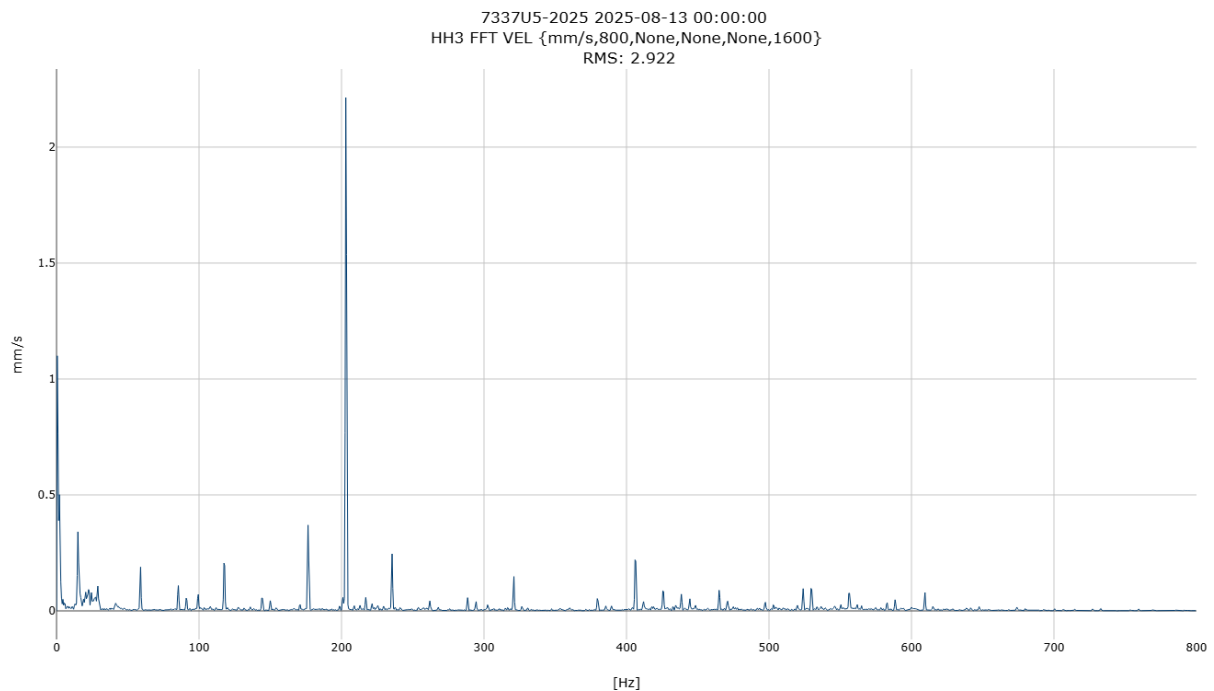
LO ME Separator After Overhaul



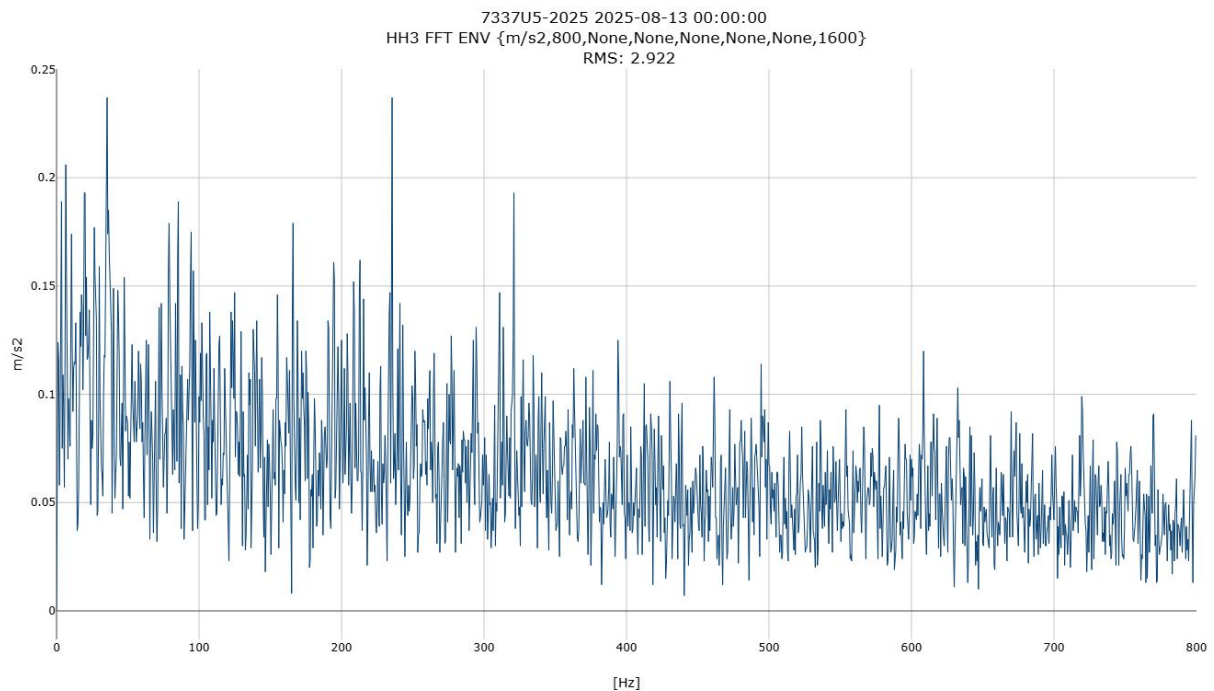
FFT Velocity H3



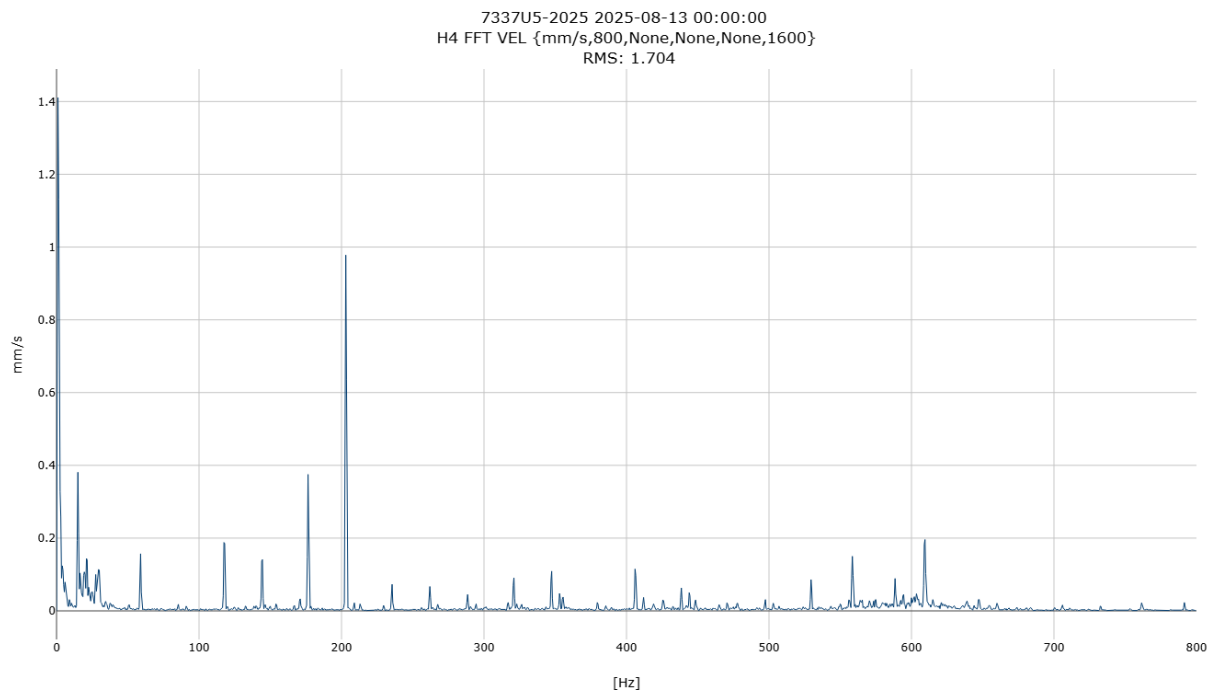
FFT Envelope H3



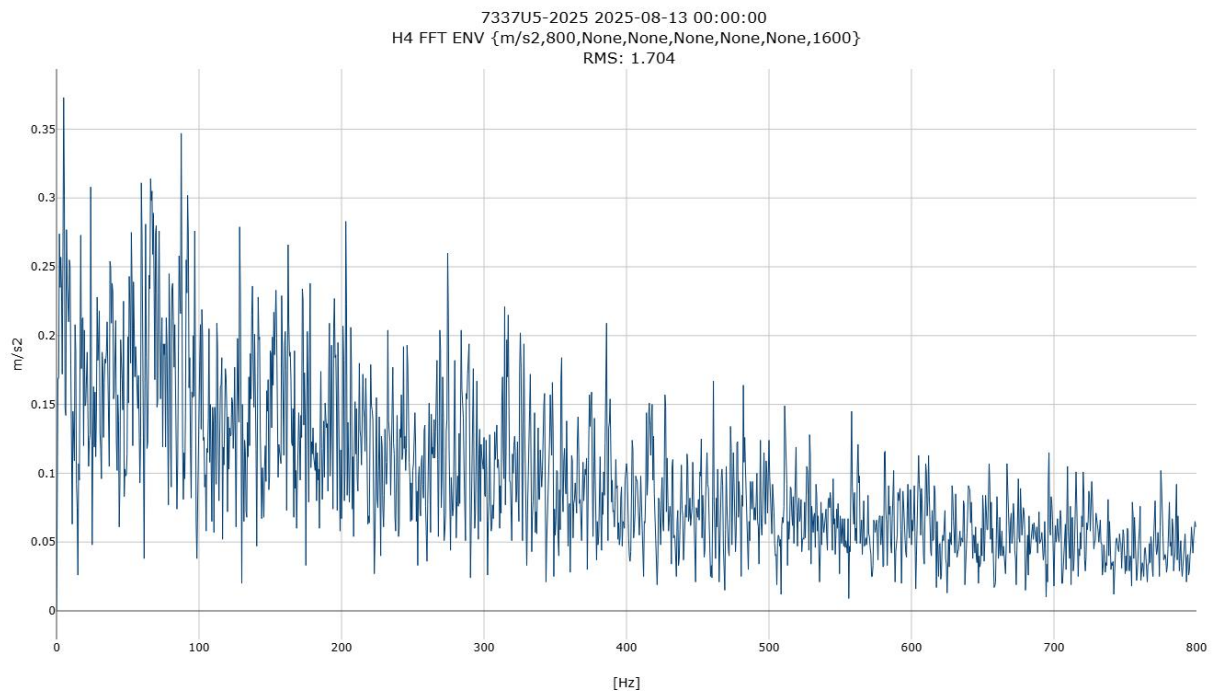
FFT Velocity HH3



FFT Envelope HH3



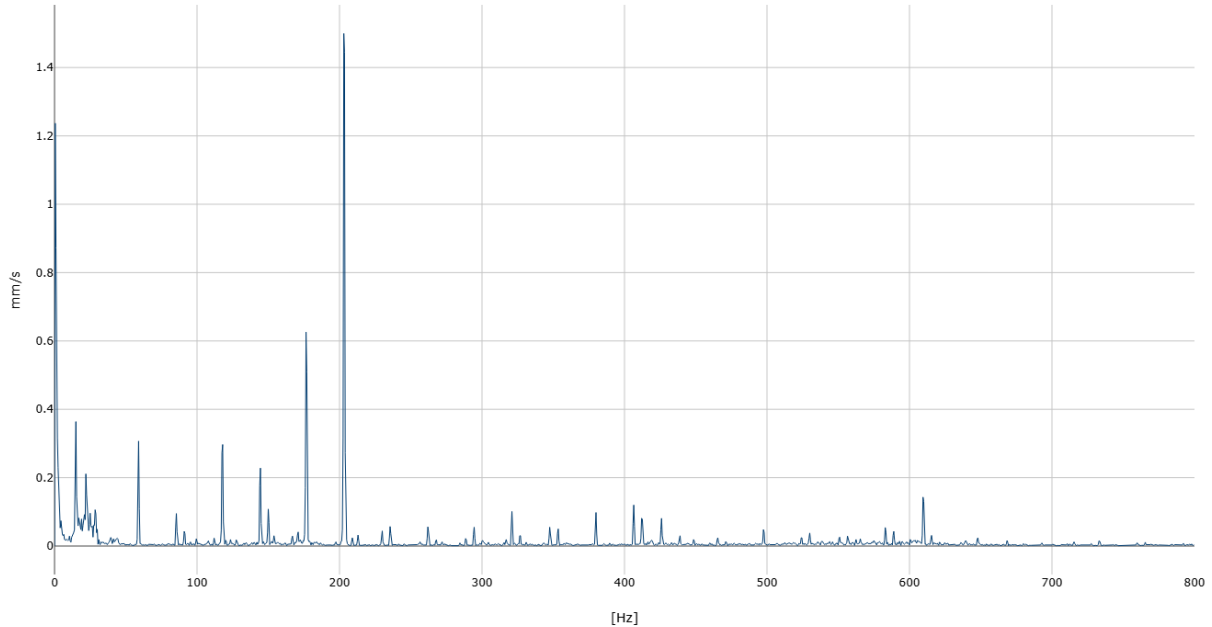
FFT Velocity H4



FFT Envelope H4

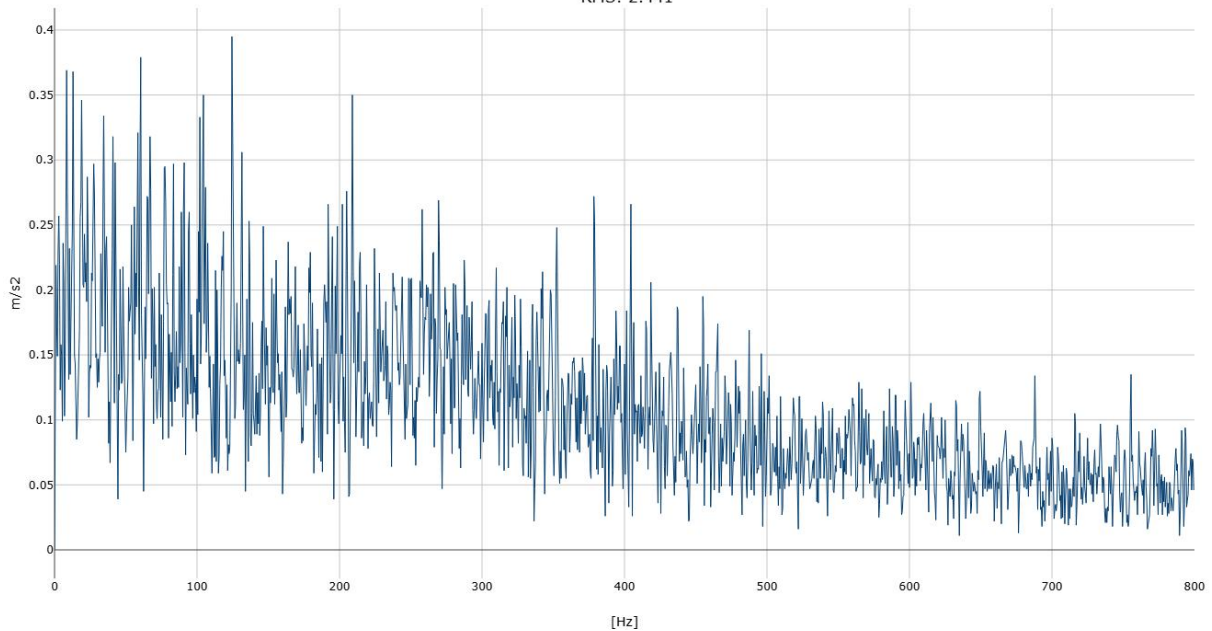


7337U5-2025 2025-08-13 00:00:00
HH4 FFT VEL {mm/s,800,None,None,None,1600}
RMS: 2.441

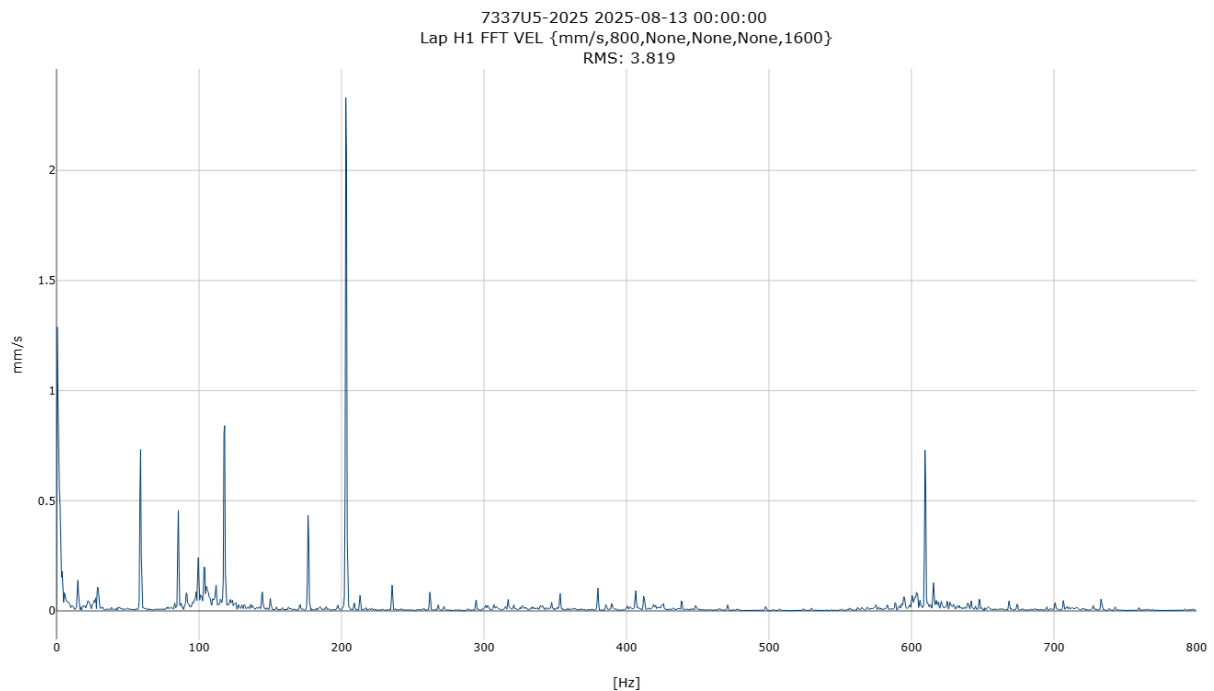


FFT Velocity HH4

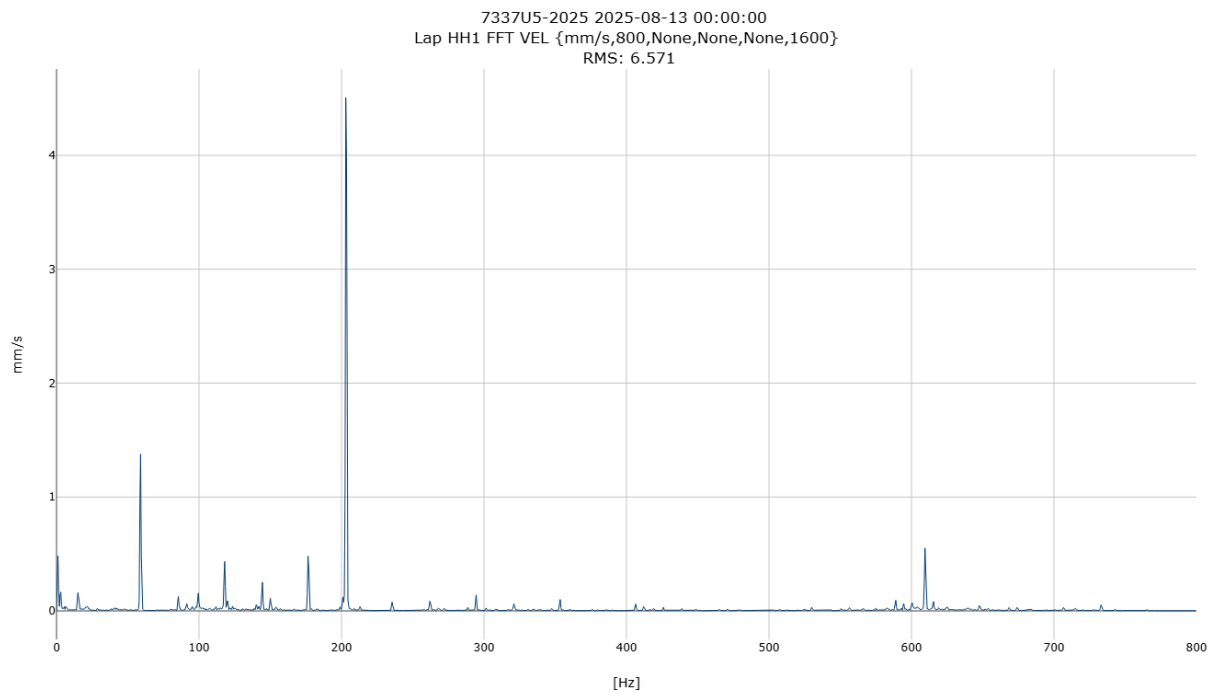
7337U5-2025 2025-08-13 00:00:00
HH4 FFT ENV {m/s2,800,None,None,None,None,1600}
RMS: 2.441



FFT Envelope HH4



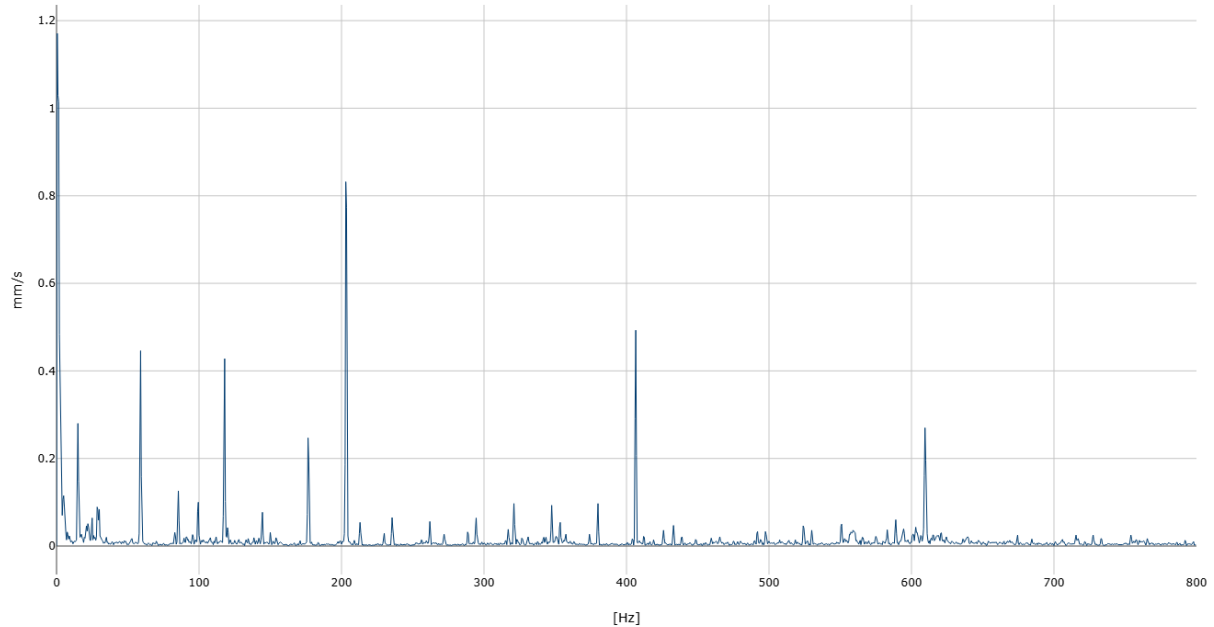
FFT Velocity Lap H1



FFT Velocity Lap HH1

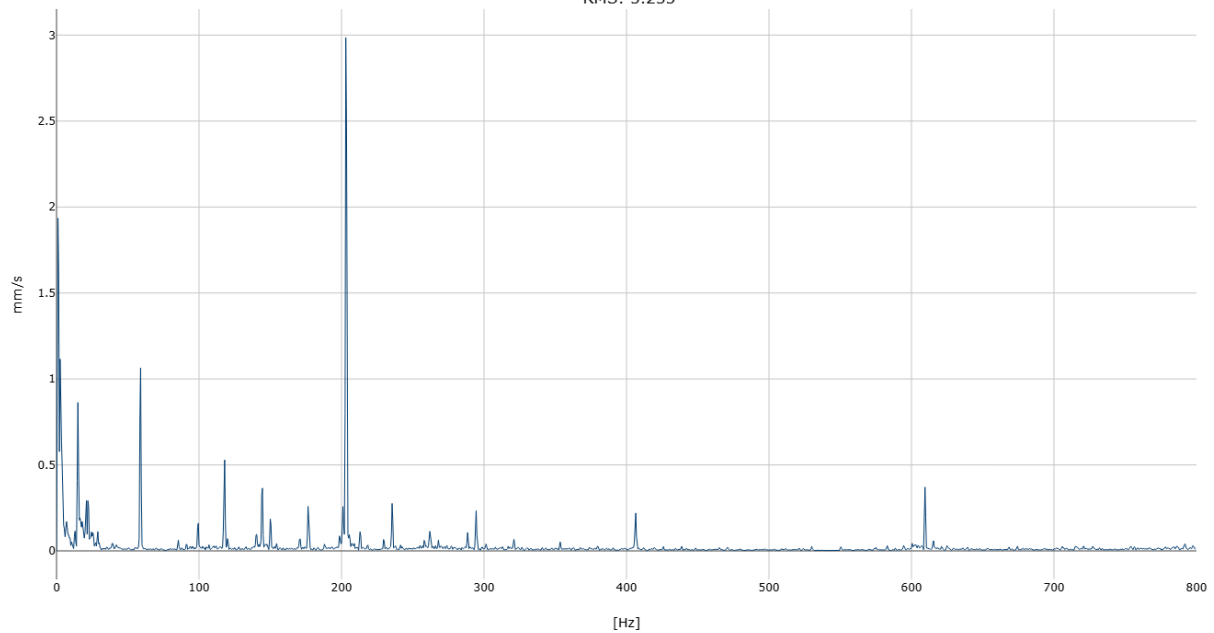


7337U5-2025 2025-08-13 00:00:00
Lap V1 FFT VEL {mm/s,800,None,None,None,1600}
RMS: 1.857



FFT Velocity Lap V1

7337U5-2025 2025-08-13 00:00:00
Top H7 FFT VEL {mm/s,800,None,None,None,1600}
RMS: 5.255



FFT Velocity Top H7